



# Scanning Appointment

**Congratulations! You have reached a critical milestone in your treatment—the scanning appointment.**

This unique procedure is essential to keeping your treatment on an accelerated schedule because it is used to build a 3-D model of your teeth on the computer. The doctor analyzes the model of your teeth to diagnose treatment issues and design your custom archwires. So you can see the scan is the first step to offering you faster treatment.



*3-D intraoral scanning*



*Computerized treatment planning*



*Customized robotically-bent archwires*

## Scanning FAQs:

### Answers to the most frequently asked questions

#### ***How does scanning work?***

We use a unique 3-D camera called an OraScanner® to scan your teeth.

As we move the OraScanner's mirror around your mouth, it flashes a harmless white light that reflects off of your teeth. Similar to a digital camera, it captures pictures as it flashes—except these pictures are 3-D images.

As you are scanned, you can watch the computer screen and see the images build into a 3-D model of your teeth.

#### ***What is the white coating applied to teeth?***

Teeth don't reflect light that well since enamel is translucent. So just before scanning, we coat your teeth with a liquid called SureWhite® that contains some of the same ingredients as toothpaste.

Because it also contains ethanol (alcohol), some patients experience a tingling sensation like you might feel from using mouthwash. Any discomfort should quickly disappear as we dry the SureWhite and evaporate the alcohol.

Once we have applied SureWhite, it is very important to keep it dry and not touch it with your tongue or cheeks. A smooth white surface provides the most accurate representation of your tooth anatomy, which is very important for producing your SureSmile custom archwires.



After the scan, you will brush your teeth to remove the SureWhite. Some patients may notice white areas that fade after more brushing and eating.



**Great smiles in less time.<sup>SM</sup>**

### ***How will you keep my mouth dry?***

Just like your bonding appointment, we will use cheek retractors and cotton to keep your mouth dry. The doctor may also prescribe a medication for you to take before the scanning appointment that inhibits saliva production.

### ***How long will this appointment take?***

In addition to your scan, we will need extra time to take current records including photos and x-rays to record your treatment progress.

The scanning procedure usually takes around 45 minutes, depending on the characteristics of your mouth. We scan your upper and lower teeth, and then we scan your teeth biting together. Just like capturing accurate tooth anatomy, it is very important that we capture your bite correctly—please bite in a natural position and don't move while we are taking the bite scan.

### ***What happens next?***

After taking your scan, we will send it to the SureSmile Digital Lab where individual tooth models will be made. Then the doctor will examine your teeth on a SureSmile computer and determine the design needed for your SureSmile custom archwires, which we will insert at your next appointment.



*Scan of upper arch*

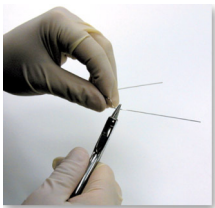


*Scan of lower arch*



*Scan of bite*

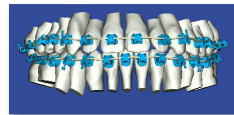
### ***What is special about custom archwires?***



In traditional treatment, a patient receives standard wires that the doctor must bend by hand over multiple appointments to get the teeth perfectly aligned.

With SureSmile, the orthodontist moves models of your teeth on the computer into the best outcome for your teeth and bite. Then the doctor orders a set of wires to

be bent robotically to achieve this result. All the bends needed for a phase of treatment are contained in this one prescription. Since the wires are custom-made for you, treatment is more efficient.



### ***Is there anything I should do while waiting for my wire insertion appointment?***

Because your brackets work together with the wire to move your teeth precisely, please closely follow the instructions you received at the beginning of treatment to avoid accidentally damaging or knocking off your brackets. If you lose brackets after your scan, you may need to come back in for another scanning appointment. Not only is that inconvenient for you, but it delays your treatment. Our concern is to obtain the most accurate model of your teeth to enable us to produce the most accurate wire prescription.

**Your scan is key to “a great smile in less time” because it captures the information we need to customize your treatment.**

[www.suresmile.com](http://www.suresmile.com)

SureSmile, OraMetric, OraScanner and SureWhite are registered trademarks of OraMetric, Inc.  
© 2005 OraMetric, Inc. MDC-500135-1