



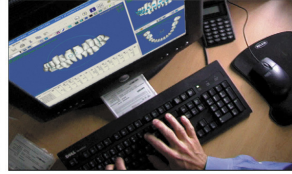
# Custom Archwires Appointment

## Great news—your SureSmile custom archwires are ready!

SureSmile wires contain prescription bends to move your teeth more precisely into place. Because these highly accurate wires are custom-designed for you, fewer wire changes and appointments are needed. That can reduce your treatment time by as much as 40%!



3-D intraoral scanning



Computerized treatment planning



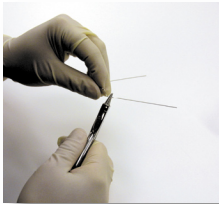
Customized robotically-bent archwires

## SureSmile Custom Wire FAQs: Answers to the most frequently asked questions

### ***What do wires have to do with braces?***

Orthodontists move teeth by attaching a bracket to each tooth to serve as a handle for securing a wire. When the wire is tied to the brackets, it delivers a force to move the teeth.

### ***How are SureSmile wires different from regular orthodontic wires?***



Regular orthodontic wires are curved in a generic shape. At the beginning of treatment, these wires are useful for getting your teeth moving in the right direction.

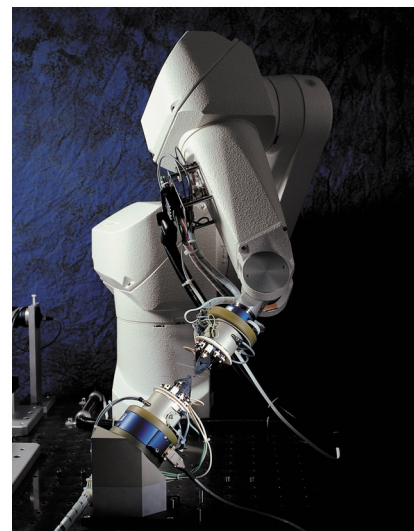
Since you are unique, you will eventually need wires that can achieve specific movements. With traditional orthodontics, the doctor inserts a stiffer wire and uses special pliers to make wire bends that the doctor estimates will achieve the desired results. Since these changes can affect neighboring teeth and your bite, the doctor makes these adjustments over several appointments to observe the effects of each change and make corrections if needed.

In contrast, SureSmile uses a robot to produce the wires more accurately than is humanly possible and includes all of the bends in one set of wires.

### ***How were my wires made?***

The process of producing your wires started at your scan appointment where we captured the location of your brackets and up-to-date tooth movements. The doctor used the resulting 3-D model to plan the final outcome of your treatment.

Your wires are fabricated by computing the wire design



needed to achieve treatment goals, and then sending the prescription to a robot. All of the bends your orthodontist requires are placed into one set of wires within 5 minutes by the robot—a process that requires adjustments over weeks or months manually.



**Great smiles in less time.<sup>SM</sup>**

### ***Should I be more careful with these wires?***

Because your brackets work together with the wire to move your teeth precisely, please closely follow the instructions you received at the beginning of treatment to avoid accidentally damaging or knocking off your brackets. If you lose brackets after receiving your wires, you may need to return for another scan followed by a new set of wires. Not only is that inconvenient for you, but it lengthens your treatment.



### ***Are SureSmile wires more comfortable?***

Many patients have found that SureSmile wires are more comfortable for two reasons. First, the discomfort of being in braces is largely caused by wire changes. Since SureSmile wires are custom-designed, there is no need to constantly change out wires to advance treatment.

Second, the SureSmile process using a wire material called Copper Ni-Ti<sup>®</sup>. It has gained popularity for being flexible yet very effective in delivering sufficient forces to move teeth consistently. It is also heat-activated, which means it responds to body heat. Here's a tip—drink something hot if you are in a hurry to finish treatment, or drink something cold to alleviate pressure when the wires are first installed.



While Copper Ni-Ti has many advantages to recommend it for orthodontic treatment, it is almost impossible to bend reliably by hand. Due to this limitation, Copper Ni-Ti could not be used once a patient progressed past the initial stages of treatment. With SureSmile, a robot heats the wire to high temperatures making it malleable enough to place the custom bends. Now this more comfortable wire material can be used at any point in treatment.

### ***How do SureSmile wires shorten treatment time?***

Instead of parceling out your treatment over two years of office visits, SureSmile allows the orthodontist to plan your treatment to the end on the computer and consolidate months of appointments. However, a plan is only as good as its execution, and SureSmile wires are the delivery vehicle that enables the doctor to carry out the plan.

**Your SureSmile custom wires achieve “a great smile in less time” because they are designed from your doctor’s computerized treatment plan, then bent precisely using advanced robotics.**

[www.suresmile.com](http://www.suresmile.com)

SureSmile, OraMetric, and OraScanner are registered trademarks of OraMetric, Inc. © 2006 OraMetric, Inc. Copper Ni-Ti is a registered trademark of Ormco. MDC-500144-1